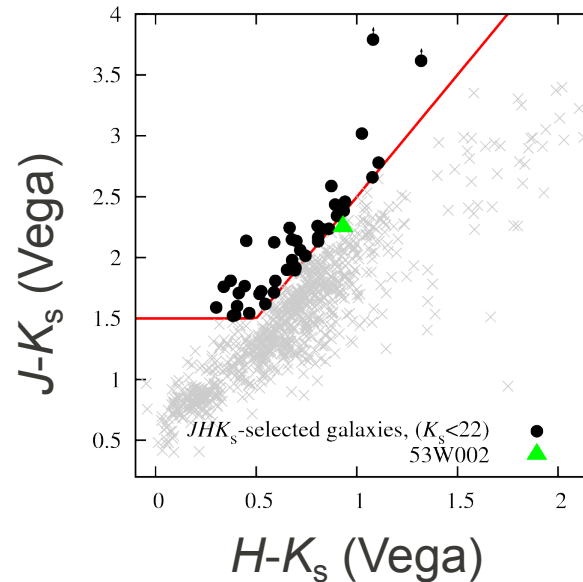
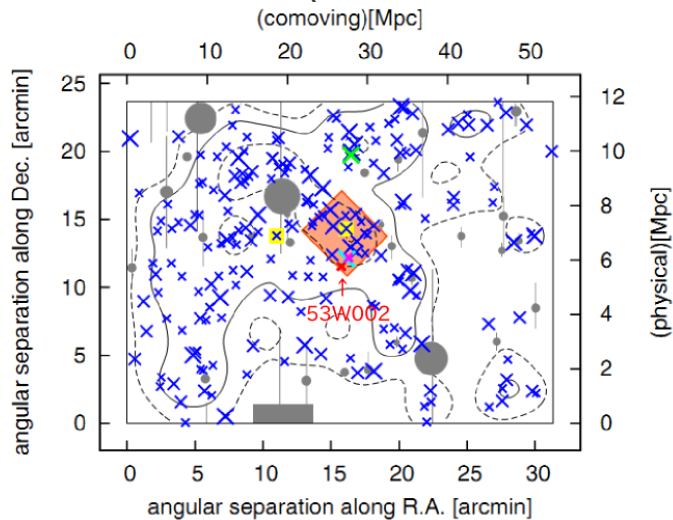


Searching for NIR-selected massive galaxies in a proto-cluster selected by LAEs at $z = 2.39$

Yu Aida et al. (Ehime Univ.)

Spatial distribution of LAEs in the 53W002 field (Mawatari et al. 2012)



We applied JHK_s -bands two-color selection for galaxies at $z \sim 2.4$ (Kajisawa et al. 2006)

Significant excess of NIR selected galaxies in the HDR of LAEs at $K_s < 21$.

Spatial distribution of JHK_s -selected galaxies

The JHK_s -selected galaxies are preferentially located toward the HDR of LAEs rather than around 53W002.

